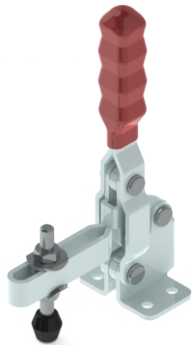
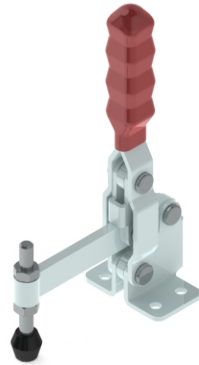


Vertical Hold Down Action

VTC Series Medium Duty Clamps Flanged Base

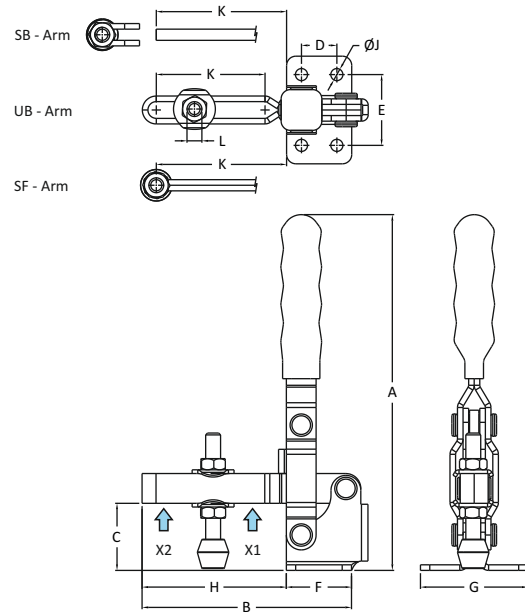


Model No.VTC-3670 UB

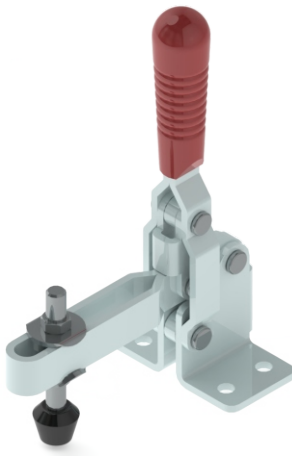


Model No.VTC-3670 SF

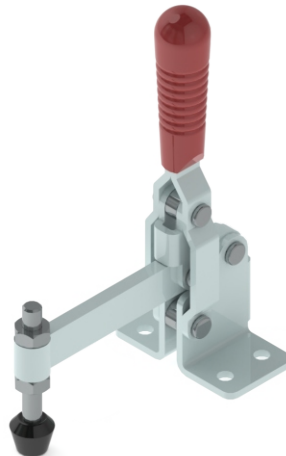
Also Available
in Stainless Steel
VTC-3670-UB-SS
VTC-4595-UB-SS



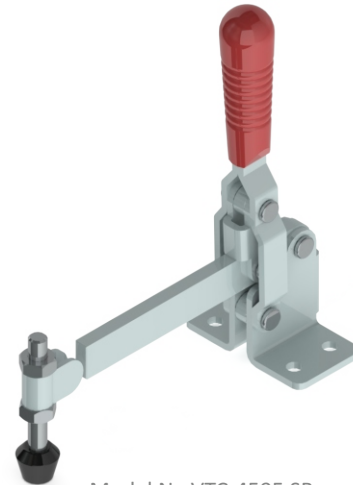
The **SF Series** have a solid hold down bar which has a fixed guide bush at its end for the spindle assembly.
The **SB Series** have a solid bar onto which the bolt retainer can be welded at any desired angle.
The **UB Series** have a 'U' bar arm which enables one or more spindles to be moved into any desired position along the arm.



Model No.VTC-4595 UB



Model No.VTC-4595 SF



Model No.VTC-4595 SB

Model No.	Weight Kgs	Handle Moves	Bar Opens	Dimensions											Holding Capacity	
				A	B	C	D	E	F	G	H	J	K	L	X2	X1
VTC-3670 UB	0.450	60°	110°	178	115	36	19	38	35	58	80	6.5	61	M8 Bolt	1.00 kN	2.00 kN
VTC-3670 SF	0.450	60°	110°	178	115	36	19	38	35	58	80	6.5	72	M8 Bolt	1.00 kN	2.00 kN
VTC-3670 SB	0.450	60°	110°	178	102	36	19	38	35	58	67	6.5	67	M8 Bolt	1.00 kN	2.00 kN
VTC-4595 UB	0.650	60°	120°	205	150	45	25	55	45	82	105	8.5	80	M10 Bolt	2.00 kN	3.90 kN
VTC-4595 SF	0.650	60°	120°	205	151	45	25	55	45	82	106	8.5	95	M10 Bolt	2.00 kN	3.90 kN
VTC-4595 SB	0.650	60°	120°	205	141	45	25	55	45	82	96	8.5	96	M10 Bolt	2.00 kN	3.90 kN
VTC-5040 SF	0.600	60°	120°	210	99	50	25	45	45	72	54	8.5	44	M10 Bolt	3.50 kN	4.90 kN
VTC-50125 UB	0.700	60°	120°	210	181	50	25	45	45	72	136	8.5	114	M12 Bolt	1.60 kN	3.40 kN
VTC-50125 SF	0.700	60°	120°	210	182	50	25	45	45	72	137	8.5	125	M12 Bolt	1.60 kN	3.40 kN
VTC-50125 SB	0.700	60°	120°	210	175	50	25	45	45	72	130	8.5	130	M12 Bolt	1.60 kN	3.40 kN
VTC-85150 UB	2.100	107°	96°	350	238	85	45	60	76	90	162	8.5	108	M16 Bolt	3.50 kN	5.90 kN
VTC-85150 SF	2.100	107°	96°	350	241	85	45	60	76	90	165	8.5	150	M16 Bolt	3.50 kN	5.90 kN
VTC-85150 SB	2.100	107°	96°	350	218	85	45	60	76	90	142	8.5	142	M16 Bolt	3.50 kN	5.90 kN
VTC-10088 SF	1.800	80°	83°	290	182	105	45	60	75	90	106	8.5	91	M12 Bolt	4.50 kN	7.80 kN